



P52100002322  
P52100002154

## Location Map



## Key Distances

- Wakad 13 KM
- Hinjewadi 11 KM
- Baner - Pashan Link Road 7 KM
- Pashan Sus Road 5 KM
- Chandani Chowk 2 KM

- Architect: Advantage Architecture
- RCC Consultant – G.A.Bhilare Consultants Pvt. Ltd.
- Landscape Designer – Suman Shilp
- Legal Advisor – SRS Advocates

J.V. with



HARI GROUP

**Site Address:** Survey No. 51/3 (P) & 51/4 Bavdhan Khurd, Near Goodwill Furniture, Next to Sanjay Ghodawat Institute, Mumbai - Bangalore Highway, Pune - 411021. Call: 77220 18555 / 88055 88555

**Corporate Office:** Flat No. 101, Saniket House, CTS No. 37/6, Lane No. 6, Prabhat Road, Erandawane, Pune - 411 004. Call: 020-25674555 / 8446 800555 | email: sales@saniket.com | www.saniket.com

**Disclaimer:** All images are for representative purposes unless otherwise noted. This brochure does not constitute any form of an offer and/or agreement and all purchases shall solely be governed by the terms and conditions of the agreement for sale.

sakeindia.org

# SUN Winds

A lifestyle of serenity @ Bavdhan

# A kingdom of Rising Sun



Rise to a  
*New Tomorrow*

Inspired by the breathtaking view of the rising sun, our apartments are designed to be aesthetically appealing as well as to give you the best of breathing and living space. We understand your need to find a safe abode for yourself which will not only shelter you, but also give you comfort. Saniket's Sunwinds presents striking 1, 2 and 3 BHK apartments for you to rise to a new tomorrow, every day!

## ★ Amenities ★

- ★ Party Lawn
- ★ Stage
- ★ Party Hall
- ★ Outdoor Gym
- ★ Yoga & Mediation Hall
- ★ Children's Play Area
- ★ Brain Game Den
- ★ Senior Citizen Space
- ★ Solar System Connection for Master Toilet
- ★ Intercom Facility with Video Door Phone
- ★ CCTV Surveillance in Common Areas
- ★ Ever Ready Fire Fighting System
- ★ Decorative Entrance Lobby
- ★ Elegant Compound Wall
- ★ Automatic Lift of Reputed Make
- ★ Back-up for Common Areas
- ★ Provision for Back-up in Every Flat
- ★ Vermi-culture Pit
- ★ Rainwater Harvesting
- ★ Ample Place for Parking

## 1 BHK



## 2 BHK



## ★ Specifications ★

### STRUCTURE

- ★ Earthquake resistance R.C.C. frame structure

### MASONRY

- ★ External wall - Siporex blocks
- ★ Internal wall - Siporex blocks

### PLASTERING

- ★ Sand face double coat plaster for external walls and P.O.P / Gypsum Sunla finish plaster for internal walls

### FLOORING / TILING

- ★ Living room, dining, other rooms & passage - vitrified
- ★ Toilet: Anti-skid ceramic tiles
- ★ Terrace: Anti-skid ceramic tiles
- ★ Parking: Chequered / Paving blocks
- ★ Staircase: Kota / Tiles - Tread + Riser

### DADO FOR

- ★ Kitchen platform: Granite kitchen platform with S.S. sink
- ★ Toilet: Designer tiles up to lintel level
- ★ Kitchen platform: Designer tiles up to lintel level / white glazed tiles below platform

### DOOR FRAMES

- ★ Main Door: Wooden door frame with laminated finish door with SS Fittings
- ★ Toilet and Window - Black granite frame

### DOOR SHUTTERS

- ★ Main Door: Laminated finish door with night latch
- ★ Toilet and Others: Waterproof flush door with laminate on both sides
- ★ Door Fitting: Cylindrical locks of reputed make

### WINDOWS

- ★ Three track UPVC / Aluminum sliding windows (one mosquito & two glasses) with M.S. grill

### PLUMBING

- ★ Concealed plumbing C.P.V.C. / U.P.V.C. / P.V.C. / C.I. Pipes

### C.P FITTING

- ★ Single lever diverter system of reputed make

### SANITARY

- ★ Sanitary of reputed make

### ELECTRICAL WORKS

- ★ Concealed wiring with adequate electric points

### ELECTRICAL SAFETY

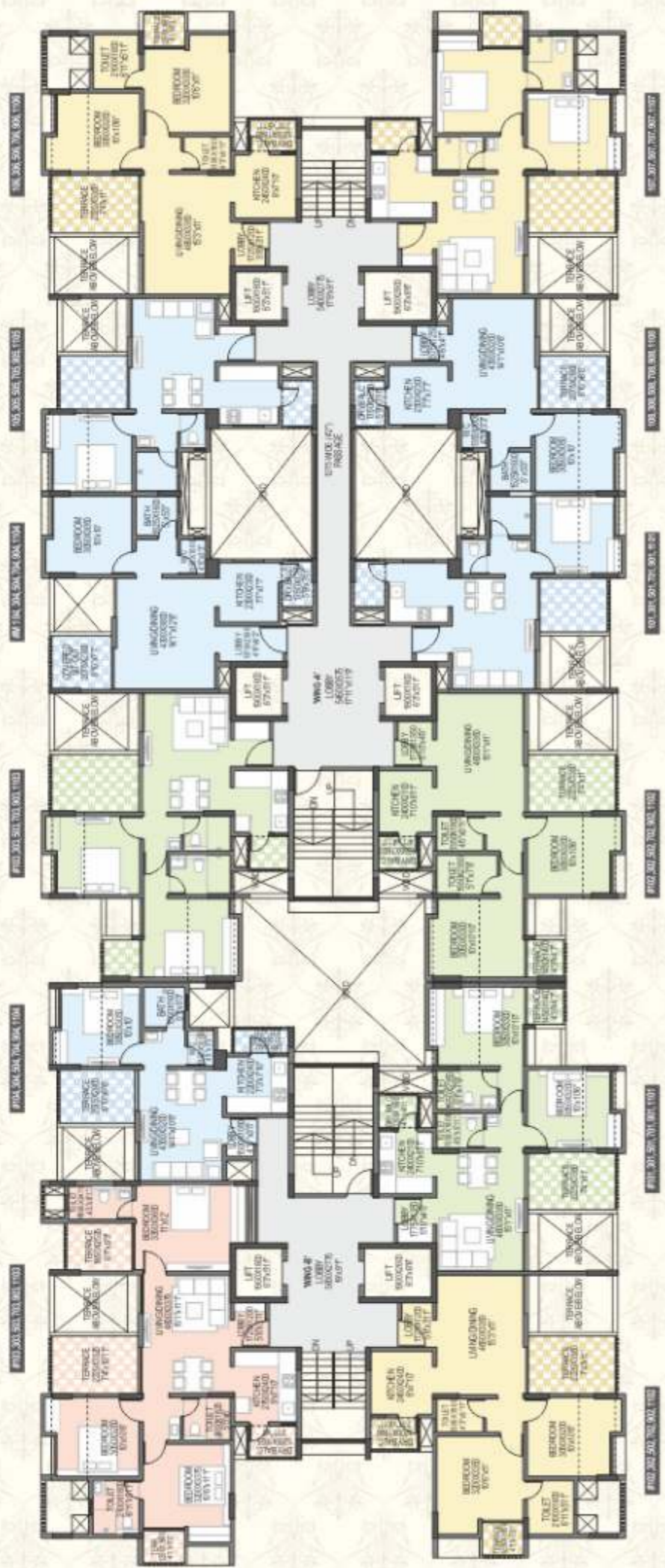
- ★ Electrical miniature circuit breaker

### PAINTING

- ★ Oil bound distemper
- ★ Oil painted grills
- ★ Apex paint for external walls
- ★ Satin for staircase

# BUILDING - A & B

## ODD FLOOR PLAN



AREA STATEMENT IN SQ.FT. (BUILDING - B)

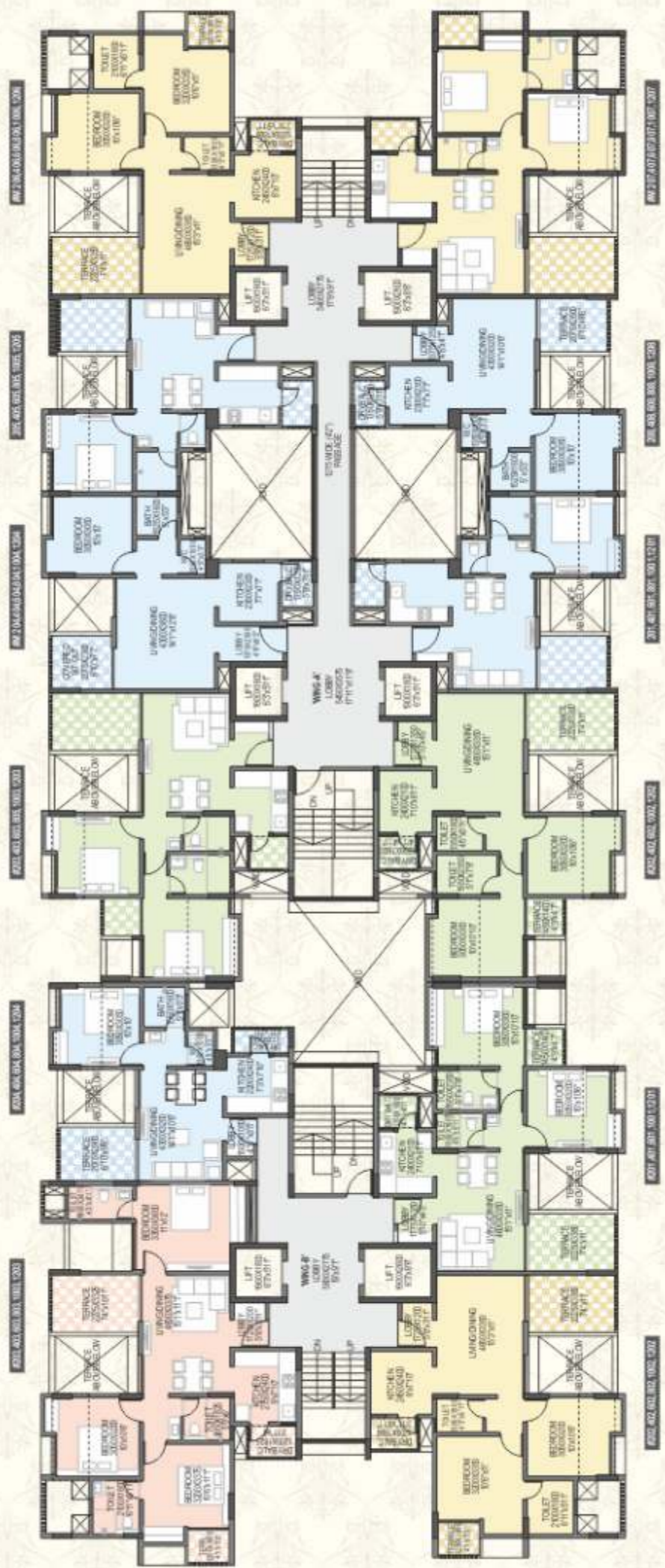
FLAT NO.	Rera Carpet		Enclosed Balc.		Dry Bal.		Terrace		Cupboard Area		Total Area	
	sq.m	sq.ft	sq.m	sq.ft	sq.m	sq.ft	sq.m	sq.ft	sq.m	sq.ft	sq.m	sq.ft
#101,301,501,701,901,1101	47.87	515	8.69	94	1.875	20	9.45	102	1.395	15	69.3	746
#102,302,502,702,902,1102	52.65	567	3.81	41	2.16	23	9.45	102	1.515	16	69.6	749
#103,303,503,703,903,1103	71.49	770	3.81	41	2.19	24	14.07	151	2.95	32	94.5	1017
#104,304,504,704,904,1104	34.24	369	4.94	53	1.89	20	6.02	65	0.39	4	47.5	511

- Note:
- All areas are mentioned in metric system.
  - Internal brick work and columns are included in carpet area.
  - Balconies, terraces and enclosed balconies areas are mentioned separately.
  - Furniture is for indicated purpose. service shaft & electrical equipment/furniture location may vary as per site condition.
  - Dimension mentioned are unfinished / brickwork to brickwork



# BUILDING - A & B

## EVEN FLOOR PLAN



AREA STATEMENT IN SQ.FT. (BUILDING - B)

FLAT NO.	Rera Carpet		Enclosed Balc.		Dry Bal.		Terrace		Cupboard Area		Total Area	
	sq.m	sq.ft	sq.m	sq.ft	sq.m	sq.ft	sq.m	sq.ft	sq.m	sq.ft	sq.m	sq.ft
#201,401,601,801,1001,1201	47.79	514	8.69	94	1.875	20	9.48	102	1.395	15	69.2	745
#202,402,602,802,1002,1202	52.26	563	3.81	41	2.16	23	9.45	102	1.515	16	69.2	745
#203,403,603,803,1003,1203	70.51	759	3.81	41	2.19	24	9.4	101	2.92	31	88.8	956
#204,404,604,804,1004,1204	34.02	366	4.94	53	1.89	20	6.02	65	0.39	4	47.3	509

- Note:
- All areas are mentioned in metric system.
  - Internal brick work and columns are included in carpet area.
  - Balconies, terraces and enclosed balconies areas are mentioned separately.
  - Furniture is for indicated purpose. service shaft & electrical equipment/furniture location may vary as per site condition.
  - Dimension mentioned are unfinished / brickwork to brickwork
  - 8th Floor is Refused Area - Flat No. Wing A - 802 & Wing B - 801.



AREA STATEMENT IN SQ.FT. (BUILDING - A)

FLAT NO.	Rera Carpet		Enclosed Balc.		Dry Bal.		Terrace		Cupboard Area		Total Area	
	sq.m	sq.ft	sq.m	sq.ft	sq.m	sq.ft	sq.m	sq.ft	sq.m	sq.ft	sq.m	sq.ft
#101,301,501,701,901,1101	35.05	377	4.3	46	2.1	23	5.4	58	0.4	4	47.2	508
#102,302,502,702,902,1102	47.87	515	8.7	94	1.9	20	9.5	102	1.4	15	69.3	746
#103,303,503,703,903,1103	47.87	515	8.7	94	1.9	20	9.5	102	1.4	15	69.3	746
M #104,304,504,704,904,1104	43.62	470	0.0	0	2.1	23	4.8	51	0.4	4	50.9	548
#305,505,705,905,1105	35.05	377	4.3	46	2.1	23	5.4	58	0.4	4	47.2	508
#106,306,506,706,906,1106	52.65	567	3.8	41	2.2	23	9.5	102	1.5	16	69.6	749
#107,307,507,707,907,1107	52.56	566	3.8	41	2.2	23	9.5	102	1.5	16	69.5	748
#108,308,508,708,908,1108	35.05	377	4.3	46	2.1	23	5.4	58	0.4	4	47.2	508
M #105	43.4	467	0.0	0	2.1	23	4.7	50	0.4	4	50.6	544

AREA STATEMENT IN SQ.FT. (BUILDING - A)

FLAT NO.	Rera Carpet		Enclosed Balc.		Dry Bal.		Terrace		Cupboard Area		Total Area	
	sq.m	sq.ft	sq.m	sq.ft	sq.m	sq.ft	sq.m	sq.ft	sq.m	sq.ft	sq.m	sq.ft
#201,401,601,801,1001,1201	34.81	375	4.27	46	2.1	23	5.39	58	0.4	4	47.0	506
#202,402,602,802,1002,1202	47.79	514	8.69	94	1.875	20	9.48	102	1.395	15	69.2	745
#203,403,603,803,1003,1203	47.79	514	8.69	94	1.875	20	9.48	102	1.395	15	69.2	745
M #204,404,604,804,1004,1204	40.95	441	0	0	2.1	23	6.02	65	0.4	4	49.5	532
#205,405,605,805,1005,1205	34.81	375	4.27	46	2.1	23	5.395	58	0.4	4	47.0	506
#206,406,606,806,1006,1206	52.26	563	3.81	41	2.16	23	9.45	102	1.515	16	69.2	745
#207,407,607,807,1007,1207	52.17	562	3.81	41	2.16	23	9.45	102	1.515	16	69.1	744
#208,408,608,808,1008,1208	34.81	375	4.27	46	2.1	23	5.39	58	0.4	4	47.0	506